

*"A Quaker meeting was settled in Osmotherley in 1652 by John Whitehead who, himself converted by George Fox, converted villagers including Thomas Foster, Cuthbert Tyreman, and James Hildreth. The early Friends met in one another's houses and maintained a burial ground from 1660, experiencing persecution during that time."*

From the Historic England website: [www.historicengland.org.uk](http://www.historicengland.org.uk)

## Osmotherley Meeting House Donation Form

I wish to donate £..... by either BACS transfer to:

**Account name:** Osmotherley Quaker Meeting

**Sort code:** 40-52-40

**Account number:** 00012711

Please add reference 'OMH Appeal' and send a confirmation email to [osmotherley@quaker.org.uk](mailto:osmotherley@quaker.org.uk) with your name and address. To Gift Aid your donation complete the form below and return by post.

Or you can send this form with a cheque or charity voucher payable to 'Osmotherley Quaker Meeting'.

Your name.....

Address.....

Postcode..... Email.....

**Gift Aid** "I understand that Osmotherley Quaker Meeting will reclaim 25p on every £1 that I give. I also understand that if the total amount of tax reclaimed by all the charities I Gift Aid to in any tax year, exceeds the amount of tax I paid in the year, HMRC will seek collect the difference from me."

Signed..... Date.....

**Please send this form to: Osmotherley Meeting House Appeal,  
Friends Meeting House, 36 West End,  
Osmotherley, Northallerton,  
North Yorkshire DL6 3AA.**

## Osmotherley Meeting House

Please help us make our Meeting House fit for the twenty first century.



Friends have had a presence in Osmotherley and the adjacent villages since the 1650's. Our 1732 Meeting House enjoys a village location on the western edge of the North York Moors National Park. It is a Grade II Listed building within a Conservation Area.

Since 1992 Friends have re-established regular public worship in the Meeting House, alongside the adjacent Quaker hostel accommodation established by young Friends in about 1942. We know several generations of Young Friends and families have warm memories of staying at Osmotherley. However, for the last few years, the separate hostel dormitory accommodation has been mothballed pending decisions on the Meeting House.

We love our building with its welcoming open fire and the sunny south facing windows but, in recent years the inadequacies of the building have prevented us from using the Meeting House to its full potential for Quaker and community activities.

Our Meeting House is not at all accessible to anyone other than the most agile. The structural condition of the kitchen, erected in haste in 1947, is becoming a worry. The grounds become almost inaccessible after winter rains.

## What we would like to do

Our architect has recommended we take the opportunity to make the ground floor of the Meeting House on one level to be fully accessible for all. The single storey 1947 kitchen extension would be replaced with a two storey building built to modern sustainable standards.

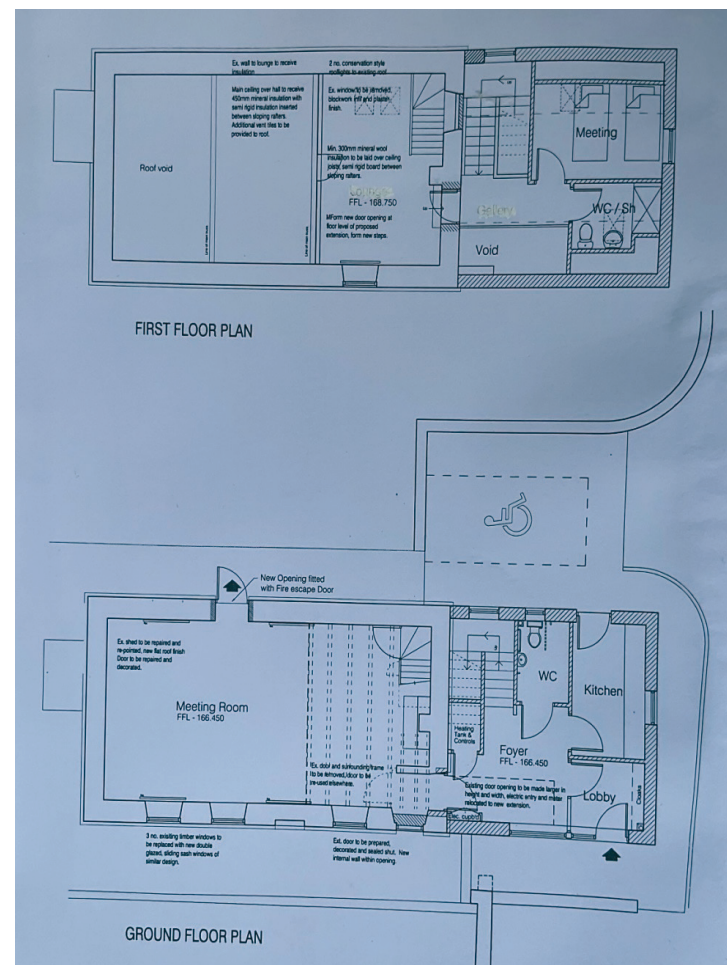
This would enable the provision of:

- an entrance lobby
- a welcoming foyer lobby
- a more convenient kitchen and WC.
- an additional small meeting room upstairs.
- a more sustainable heating system
- a sensitively designed disabled car parking space in an excavated area outside.

We have explored these proposals with the National Park Planning Team.



An artist's impression of the proposed new two-storey extension.



Architect's blue-print for the meeting house and extension, with disabled parking space.

We are excited by the project but realise we are faced with an enormous task ahead of us, particularly on meeting the high costs required for such a historic asset.

We feel that for too long we have patched up our building. We now have a chance to grasp the opportunity of making it into a welcoming, accessible and sustainable building for Quaker worship, outreach and community use.

**Can you help us to raise the cost of £250,000?**

**Please see the contribution details overleaf.**

**Or call 01609 883826**